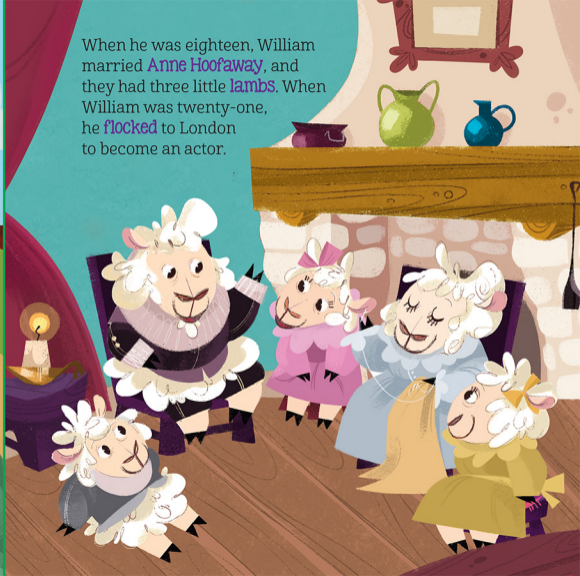


William Sheepspeare was a poet and playwright who lived in the sixteenth century. He was commonly known as the **Baa-rd** of Avon.



When he was eighteen, William married **Anne Hoofaway**, and they had three little **lambs**. When William was twenty-one, he **flocked** to London to become an actor.



In London, William Sheepspeare joined Lord Chamberlamb's acting company. He and a special herd of actors called the Chamberlamb's Men helped build the Globe Theater.



In its hayday, the Globe was the most famous theater around. Because of the theater's success, William cud purchase a new home in Stratford for his lambily.

